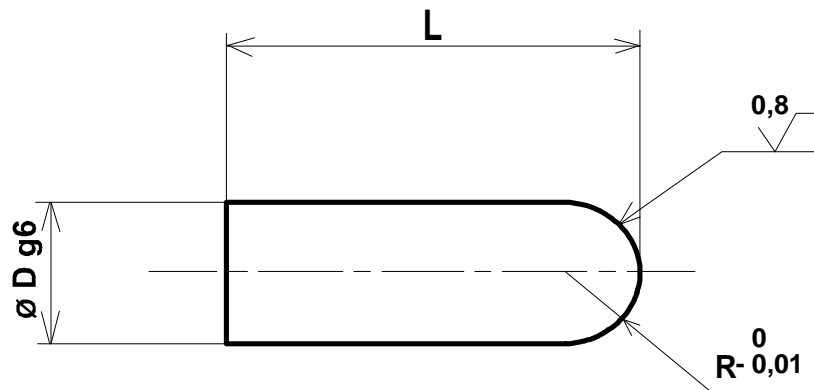


## CARBIDE BARS WITH SPHERICAL ENDS      Type BS

These bars are tungsten carbide cylinders whose functional part is a segment of sphere.  
 These bars are used as bearing points when positioning has to be effected in restricted areas. They are soldered to or fitted in their support. As they are conductive it is usually easy to check that they are in contact with the part being positioned by making sure that the electric circuit is closed.



ØD (mm)	L (mm)
1	5
1.5	6
2	7
3	9
3.175	12.7
4	10
5	11

References : BS D\*L (BS 1,5x6)